

# Flexible Road Partition JISLON<sup>®</sup> Pole Cone – NSE-type Verge Marker

## INSTRUCTION MANUAL

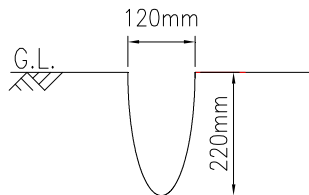
The Pole Cone – NSE-type Verge Marker is designed as an auxiliary device for traffic safety. Please read this instruction manual carefully for correct use.

### GB GENERAL INSTRUCTIONS

1. (GB) Do not install in temperatures below 5 degrees Celsius, because cement does not harden so well, and the Strength will be lower.
2. (GB) Do not install on rainy or snowy days, because the hardening of cement is reduced, causing, cracking and Poor strength.

### GB INSTALLATION PROCESS

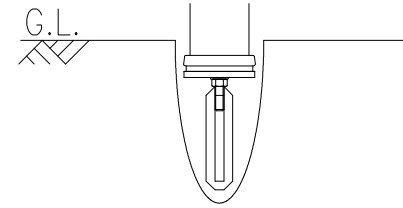
1. (GB) Ensure safety at installation spot.
2. (GB) Decide where the product should be positioned.
3. (GB) Dig a hole in ground.



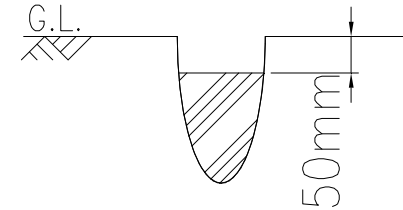
4. (GB) Fixed a steel anchor on the screw of the base.



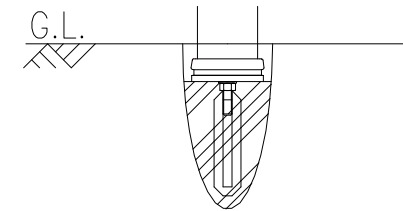
5. (GB) Confirm whether the anchor fits in the core.



6. (GB) Pour the mixed cement into the hole until it is 50mm below the ground surface.



7. (GB) Confirm the direction of the red & white reflective tape. Put the product into the hole and push down until the bottom is in complete contact with the cement surface.



8. (GB) Check perpendicular & the direction and waiting time for the cement to harden. Cover the cement surface with soil.

